

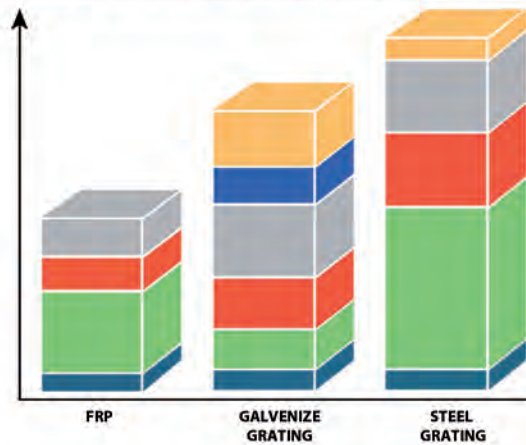
Innovative **FRP** Solutions for a **Stronger Future**

www.emsikompozit.com



Başiskele Sanayi Sitesi 9. Blok, No:10 Başiskele/KOCAELİ / TURKEY
Tel: +90 262 229 9264 Mobile 1 : +90 543 827 9828 Mobile 2 : +90 532 424 8552
Email : bilgi@emsiteknik.com emsikompozit@gmail.com
www.emsikompozit.com

COMPARISON WITH STEEL AND GALVENIZE



1. Maintenance
2. Surface Clean-Up
3. Installation
4. Compatible With Other Products
5. Material
6. Project Space

WHAT IS FRP?

FRP is fiberglass reinforced product that have strong resistance towards heavy loads and chemicals.

WHY FRP?

FRP (Fiberglass Reinforced Plastic) products excel in durability, resisting corrosion. Their lightweight composition enables easy installation and reduces structural strain. With inherent resistance to heat, chemicals, and electricity, FRP products ensure safety while requiring minimal maintenance.

- :: FRP products offer a remarkable strength-to-weight ratio, it is five times stronger than steel on a pound-for-pound basis.
- :: Corrosion costs the global economy an estimated \$2.5 trillion annually, FRP has a strong resistance to corrosion compared to steel..
- :: FRP composites can extend the service life of structures up to 40 years due to their corrosion resistance and durability
- :: FRP products offer enhanced safety with non-conductive properties and increased slip resistance, providing a safer option than steel for structural applications.

■ Strong Corrosion Resistance



■ Low Maintenance



■ Slip Resistance



■ Long Service Life



■ Fire Retardant



■ Electrically non-conductive



■ Lightweight



■ UV Resistant



APPLICATION AREAS

:: INDUSTRIAL PLANTS

:: COOLING TOWERS

:: HIGHWAYS

:: WASTE WATER TREATMENT FACILITY

:: SEAPORT & POOL

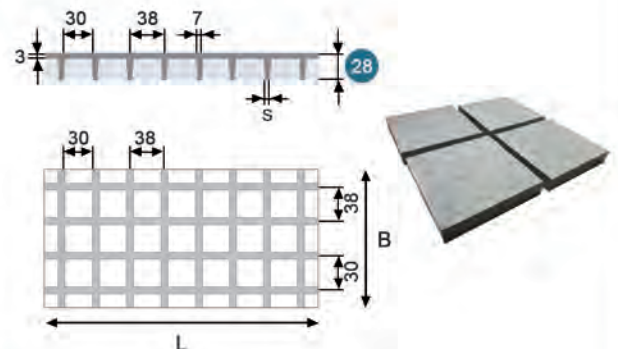
Fiberglass Reinforced Products (FRP) have emerged as a versatile solution revolutionizing various industries. Their exceptional attributes make them indispensable across a spectrum of activity fields. In construction, FRP redefines durability, offering corrosion resistance and extended lifespans for structures exposed to harsh environmental conditions. The automotive and aerospace sectors benefit from FRP's lightweight nature, enhancing fuel efficiency and overall performance. For renewable energy, FRP finds its niche in wind turbine blades, harnessing its strength and aerodynamic capabilities. Moreover, FRP's non-conductive properties make it a safety standout in electrical insulation, mitigating the risk of electrical shocks. Industries reliant on chemicals and corrosive materials, such as wastewater treatment, tap into FRP's resistance prowess. The marine industry takes advantage of FRP's resistance to saltwater and chemicals in various marine structures. In summary, the application areas of FRP are extensive and far-reaching, promising innovation and efficiency across industries seeking cutting-edge solutions.

H25 + 3MM FRP DIAMOND COVERED GRATING



300 mm	1.111 kg	2 x F	5.808 kg /m ²	3 x q
450 mm	489 kg	3 x F	1.727 kg /m ²	4 x q
600 mm	275 kg	4 x F	726 kg /m ²	5 x q
750 mm	174 kg	5 x F	374 kg /m ²	7 x q
900 mm	121 kg	6 x F	215 kg /m ²	8 x q
1.000 mm	99 kg	7 x F	157 kg /m ²	9 x q
1.200 mm	68 kg	8 x F	91 kg /m ²	10 x q

L/125=0,75%

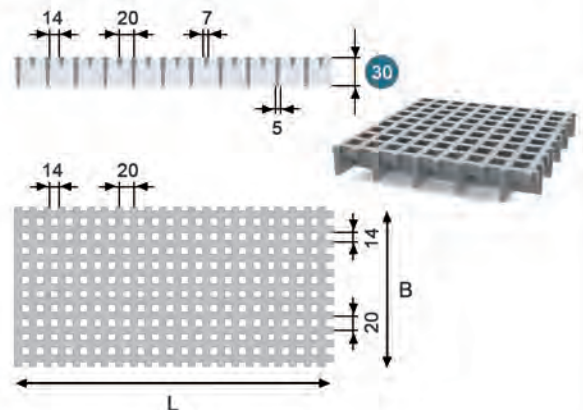


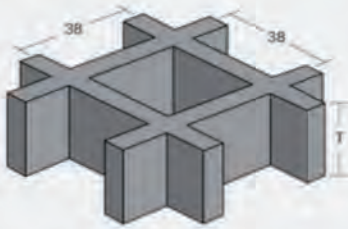
19X19/H30 MINI MESH GRATING



300 mm	1.750 kg	2 x F	9.420 kg /m ²	3 x q
450 mm	780 kg	3 x F	2.774 kg /m ²	4 x q
600 mm	437 kg	4 x F	1.166 kg /m ²	5 x q
750 mm	279 kg	5 x F	595 kg /m ²	7 x q
900 mm	193 kg	6 x F	344 kg /m ²	8 x q
1.000 mm	156 kg	7 x F	250 kg /m ²	9 x q
1.200 mm	108 kg	8 x F	145 kg /m ²	10 x q

L/125=0,75%

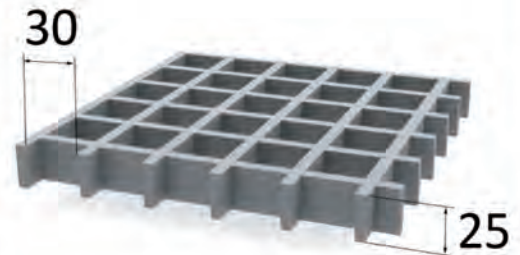




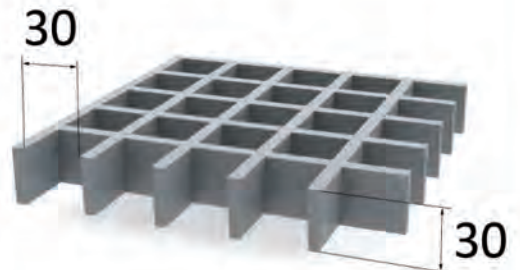
Height(mm)	Mesh(mm)	Panel Sizes(mm)
H25	38x38	1000x1000, 1000x2000, 1220x3660
H25+3	38 x 38	1220x3660, 1000x2000, 1000x1000
H30	19x19 (mini)	1000x1000, 1000x2000
H30	38x38	1000x1000, 1000x2000, 1220x3660, 1000x3000
H38	38x38	1000x1000, 1000x2000, 1220x3660, 1000x4000
H50	38x38	1000x1000, 1000x2000

H25 LOAD CAPACITY TABLE

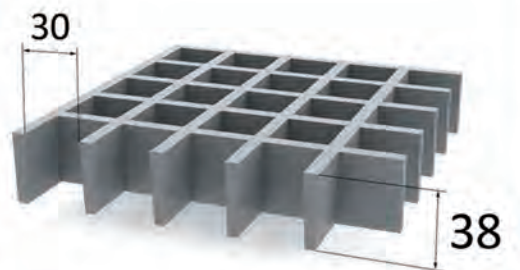
				
300 mm	642 kg	2 x F	5.370 kg/m ²	3 x q
450 mm	453 kg	3 x F	1.930 kg/m ²	4 x q
600 mm	318 kg	4 x F	710 kg/m ²	5 x q
750 mm	205 kg	5 x F	366 kg/m ²	7 x q
900 mm	180 kg	6 x F	195 kg/m ²	8 x q
1.000 mm	126 kg	7 x F	140 kg/m ²	9 x q
1.200 mm	92 kg	8 x F	105 kg/m ²	10 x q


H25 GRATING
H30 LOAD CAPACITY TABLE

				
300 mm	816 kg	2 x F	11.290 kg/m ²	3 x q
450 mm	552 kg	3 x F	3.334 kg/m ²	4 x q
600 mm	427 kg	4 x F	1.405 kg/m ²	5 x q
750 mm	301 kg	5 x F	863 kg/m ²	7 x q
900 mm	203 kg	6 x F	425 kg/m ²	8 x q
1.000 mm	175 kg	7 x F	352 kg/m ²	9 x q
1.200 mm	136 kg	8 x F	205 kg/m ²	10 x q


H30 GRATING
H38 LOAD CAPACITY TABLE

				
300 mm	1455 kg	2 x F	23.132 kg/m ²	3 x q
450 mm	1020 kg	3 x F	6.790 kg/m ²	4 x q
600 mm	725 kg	4 x F	2.825 kg/m ²	5 x q
750 mm	521 kg	5 x F	1.404 kg/m ²	7 x q
900 mm	430 kg	6 x F	859 kg/m ²	8 x q
1.000 mm	317 kg	7 x F	605 kg/m ²	9 x q
1.200 mm	275 kg	8 x F	390 kg/m ²	10 x q

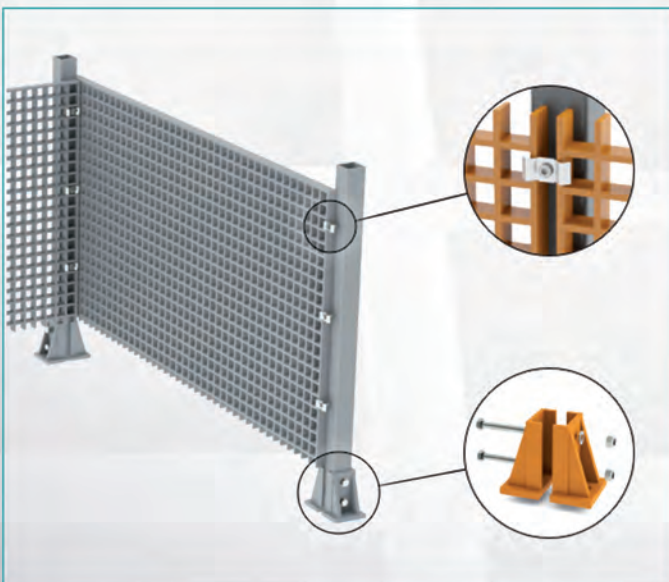

H38 MOLDED GRATING


FRP PROFILES

Fiber Reinforced Polymer (FRP) profiles offer a range of benefits across industries, boasting impressive strength-to-weight ratios, corrosion resistance, and durability. With non-conductive properties, they enhance safety in electrical applications. Their design flexibility allows for innovative solutions in construction, marine, and renewable energy sectors. As a reliable and forward-thinking choice, FRP profiles reshape industries and possibilities in modern engineering solutions.



FASTENERS FOR MOLDED GRATINGS (M CLIPS)



OUR APPROACH

Experience excellence at a reasonable cost - reach out to us today.

Briefing and Planning



We sit together with you and check your briefing together.

Production



Our experts produce grating panels according to given dimensions, colours and requirements.

Packaging



We package the panels carefully according to container sizes.

Shipping



We either take care of all delivery process for you, or you do it yourself (FOB or CNF)

SEE OUR REFERENCES BELOW

See some of our partners below, they all prefer Emsi Kompozit to get best in class service in Turkey



APPLICATON AREAS

